

Perimeter Small Cap Growth Fund Of The RBB Fund, Inc.

Ticker Symbol: PSIGX

I Shares Prospectus

**November 5, 2009,
as revised February 8, 2010**



PERIMETER
— CAPITAL MANAGEMENT —

Investment Adviser:

Perimeter Capital Management LLC

The Securities and Exchange Commission has not approved or disapproved these securities or passed upon the adequacy of this prospectus.
Any representation to the contrary is a criminal offense.

TABLE OF CONTENTS

SUMMARY SECTION

INVESTMENT OBJECTIVE	3
EXPENSES AND FEES	3
PRINCIPAL INVESTMENT STRATEGIES	4
PRINCIPAL INVESTMENT RISKS	5
PERFORMANCE INFORMATION	7
MANAGEMENT OF THE FUND	8
PURCHASE AND SALE INFORMATION	9
TAXES	10
POTENTIAL CONFLICTS OF INTEREST	10

FUND INFORMATION

MORE INFORMATION ABOUT FUND INVESTMENTS	11
MORE INFORMATION ABOUT RISK	11
DISCLOSURE OF PORTFOLIO HOLDINGS	14
MORE INFORMATION ABOUT MANAGEMENT OF THE FUND	14
OTHER SERVICE PROVIDERS	16

SHAREHOLDER INFORMATION

PRICING OF FUND SHARES	17
PURCHASE OF FUND SHARES	18
REDEMPTION OF FUND SHARES	22
MARKET TIMING	25
DIVIDENDS AND DISTRIBUTIONS	27
MORE INFORMATION ABOUT TAXES	27
FINANCIAL HIGHLIGHTS	31
PERFORMANCE OF COMPARABLE ACCOUNT	32

SUMMARY SECTION

FUND INVESTMENT OBJECTIVE

The investment objective of the Perimeter Small Cap Growth Fund (the “Fund”) is to seek long-term capital appreciation. This investment objective is non-fundamental and may be changed by the Fund without shareholder approval.

EXPENSES AND FEES

As a shareholder, you pay certain fees and expenses. The table below describes the fees and expenses that you may pay if you buy and hold I Shares of the Fund.

	I Shares
Shareholder Fees (fees paid directly from your investment)	
Maximum sales charge imposed on purchases	None
Maximum deferred sales charge	None
Maximum sales charge imposed on reinvested dividends	None
Redemption Fee	2.00%
Exchange Fee	None
Annual Fund Operating Expenses (expenses that you pay each year as a percentage of the value of your investment)	
Management fees	0.90%
Distribution (12b-1) fees	None
Other Expenses	<u>0.25%</u>
Total Annual Fund Operating Expenses	1.15%
<i>Fee Waiver and/or Expense Reimbursement⁽¹⁾</i>	<u>(0.05%)</u>
Fund Operating Expenses After Fee Waiver and/or Expense Reimbursement	<u>1.10%</u>

(1) The Adviser has contractually agreed to waive its advisory fee and/or reimburse expenses in order to limit Total Annual Fund Operating Expenses (other than Acquired Fund fees and expenses, brokerage commissions, extraordinary items, interest or taxes) to 1.10% of the Fund’s average daily net assets attributable to I Shares through December 31, 2011. If at any time during the first three years the Advisory Agreement is in effect, the Fund’s Total Annual Fund Operating Expenses for that year are less than 1.10%, the Adviser may recoup any waived amount from the Fund if such reimbursement does not cause the Fund to exceed existing expense limitations.

Example

This Example is intended to help you compare the cost of investing in the Fund with the cost of investing in other mutual funds. The Example assumes that you invest \$10,000 in the Fund for the time periods

indicated and that you sell your shares at the end of those periods. The Example also assumes that your investment has a 5% return each year, Fund operating expenses remain the same and you reinvest all dividends and distributions. Although your actual costs and returns might be different, based on these assumptions your approximate costs of investing \$10,000 in the Fund would be:

1 Year	3 Years	5 Years	10 Years
\$112	\$355*	\$623*	\$1,388*

* The waiver and reimbursement arrangement agreed to by the Adviser, if not extended, will terminate on December 31, 2011. Thus, the 3 Years, 5 Years and 10 Years examples reflect the waiver and reimbursement arrangement only for the first two years.

Portfolio Turnover

The Fund pays transaction costs, such as commissions, when it buys and sells securities (or “turns over” its portfolio). A higher portfolio turnover rate may indicate higher transaction costs and may result in higher taxes when Fund shares are held in a taxable account. These costs, which are not reflected in Total Annual Fund Operating Expenses or in the Example, affect the Fund’s performance. On February 8, 2010, substantially all of the assets of the Perimeter Small Cap Growth Fund, a portfolio of The Advisors’ Inner Circle Fund II (the “Predecessor Fund”), were transferred to the Fund in a tax-free reorganization (the “Reorganization”). As a result of the Reorganization, the performance and accounting history of the Predecessor Fund prior to the date of the Reorganization was assumed by the Fund. During the most recent fiscal year, the Predecessor Fund’s portfolio turnover rate was 126% of the average value of its portfolio.

PRINCIPAL INVESTMENT STRATEGIES

Under normal circumstances, the Fund invests at least 80% of its net assets in small-cap equity securities. This investment policy may be changed by the Fund upon 60 days’ prior notice to shareholders. The Fund currently defines small-cap equity securities as those of companies with market capitalizations between \$50 million and \$3 billion at the time of purchase. The Fund’s investments will generally consist of U.S. traded securities, which may include American Depositary Receipts (“ADRs”), among other types of securities.

The Fund's investment philosophy is based on the premise that a portfolio of small cap stocks with positive earnings trends, reasonable valuation, and strong fundamentals will provide superior returns over time. The Adviser selects companies with strong current earnings growth, improving profitability, strong balance sheets, and strong current and projected business fundamentals which are priced at reasonable valuations. The Adviser believes in executing a very disciplined and objective investment process and in controlling risk through a broadly diversified portfolio. Because companies tend to shift in relative attractiveness, the Fund may buy and sell securities frequently, which may result in higher transaction costs, additional capital gains tax liabilities and may adversely impact performance. In addition, in order to implement its investment strategy, the Adviser may buy or sell, to a limited extent, derivative instruments (such as futures, options, and swaps) to use as a substitute for a purchase or sale of a position in the underlying assets and/or as part of a strategy designed to reduce exposure to other risks, such as market risk. The Adviser will not necessarily sell a security that has appreciated or depreciated outside the stated market capitalization range defined above.

PRINCIPAL INVESTMENT RISKS

As with all mutual funds, a shareholder is subject to the risk that his or her investment could lose money. The principal risk factors affecting shareholders' investments in the Fund are set forth below.

Since it purchases equity securities, the Fund is subject to the risk that stock prices will fall over short or extended periods of time. Historically, the equity markets have moved in cycles, and the value of the Fund's equity securities may fluctuate drastically from day to day. Individual companies may report poor results or be negatively affected by industry and/or economic trends and developments. The prices of securities issued by such companies may suffer a decline in response. These factors contribute to price volatility, which is the principal risk of investing in the Fund.

The Fund is also subject to the risk that small-capitalization stocks may underperform other segments of the equity market or the equity market as a whole. The small-capitalization companies that the Fund invests in may be more vulnerable to adverse business or economic events than larger, more established companies. In particular, these small-cap companies may have limited product lines, markets and financial resources, and may depend upon a relatively small manage-

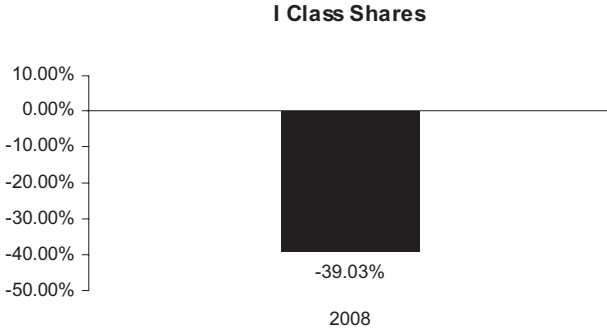
ment group. Therefore, small-cap stocks may be more volatile than those of larger companies. These securities may be traded over-the-counter or listed on an exchange.

Because the Fund may invest in ADRs, it is subject to some of the same risks as direct investments in foreign companies. These include the risk that political and economic events unique to a country or region will affect those markets and their issuers. These events will not necessarily affect the U.S. economy or similar issuers located in the United States. For more information about the Fund's investment strategy and risks associated with investing in the Fund, please read the "Fund Information" section.

PERFORMANCE INFORMATION

The bar chart and the performance table below illustrate the risks and volatility of an investment in the Fund.

The performance information shown below is that of the I Shares of the Predecessor Fund, which commenced operations on December 31, 2007. The bar chart assumes reinvestment of dividends and distributions. Total returns would have been lower had certain fees and expenses not been waived or reimbursed. Past performance (before and after taxes) does not necessarily indicate how the Fund will perform in the future.



Best and Worst Quarterly Performance (for the period reflected in the chart above)

Best Quarter: 1.88% (quarter ended June 30, 2008)	Worst Quarter: (26.39%) (quarter ended December 31, 2008)
--	--

Year to Date Total Return as of September 30, 2009: 27.31%

Average Annual Total Returns

This table compares the average annual total returns of the Fund's I Shares for the calendar year ended December 31, 2008 and since inception to those of the Russell 2000[®] Growth Index.

	1 Year	Since Inception*
Fund Returns Before Taxes	(39.03)%	(39.03)%
Fund Returns After Taxes on Distributions**	(39.03)%	(39.03)%
Fund Returns After Taxes on Distributions and Sale of Fund Shares**	(25.37)%	(25.37)%
Russell 2000 [®] Growth Index (reflects no deduction for fees, expenses or taxes)***	(38.54)%	(38.54)%

* I Shares of the Fund commenced operations on December 31, 2007.

** After-tax returns are calculated using the historical highest individual federal marginal income tax rates and do not reflect the impact of state and local taxes. Your actual after-tax returns will depend on your tax situation and may differ from those shown. After-tax returns shown are not relevant to investors who hold their Fund shares through tax deferred arrangements, such as 401(k) plans or individual retirement accounts.

*** The Russell 2000[®] Growth Index measures the performance of those Russell 2000[®] companies with higher price-to-book ratios and higher forecasted growth values. The Russell 2000[®] Index is a widely-recognized, capitalization-weighted index that measures the performance of the smallest 2,000 companies in the Russell 3000[®] Index. As of September 30, 2009, the market capitalization range of the companies in the Russell 2000 Growth Index is between \$416 million and \$3.56 billion.

MANAGEMENT OF THE FUND

Investment Adviser

Perimeter Capital Management LLC,
Five Concourse Parkway, Suite 2725, Atlanta, Georgia 30328

Portfolio Management

Mark D. Garfinkel, CFA Portfolio Manager & Chief Investment Officer Since September 2006	Jim N. Behre Director of Investment Research & Senior Research Analyst Since September 2006
---	--

PURCHASE AND SALE INFORMATION

For more information about purchasing and selling Fund Shares, including policies and restrictions, please read the section entitled “Shareholder Information”.

Minimum Initial Investment: \$1,000,000*

* Shares of the Fund may be available through certain brokerage firms, financial institutions and other industry professionals (collectively, “Service Organizations”). Certain features of the Shares, such as the initial and subsequent investment minimums and certain trading restrictions, may be modified or waived by Service Organizations. Service Organizations may impose transaction or administrative charges or other direct fees, which charges and fees would not be imposed if Shares are purchased directly from The RBB Fund, Inc. The Fund may accept initial investments of smaller amounts in its sole discretion.

You can only purchase and redeem Shares of the Fund on days the New York Stock Exchange is open and through the means described below.

Purchase and Redemption By Mail:

Perimeter Small Cap Growth Fund
c/o PNC Global Investment Servicing (U.S.) Inc.
P.O. Box 9842
Providence, RI 02940-8042

Purchase and Redemption By Wire:

PNC Bank, N.A.
Philadelphia, Pennsylvania 19103
ABA # 0310-005-3
Account # 8611799161
F/B/O Perimeter Small Cap Growth Fund
Ref. (Shareholder or Account Name; Account Number)

Redemption By Telephone:

Call the Transfer Agent at 1-888-968-4964

** A wire charge of \$7.50 will apply

Redemption Fee: In an effort to discourage market timing, the Fund charges a 2% fee on redemptions of Fund Shares sold within 7 days of their purchase.

Involuntary Redemption: The Fund reserves the right to redeem a shareholder’s account in the Fund at any time the value of the account falls below \$500 as a result of a redemption or an exchange request.

TAXES

The Fund intends to make distributions that may be taxed as ordinary income or capital gains. The Fund contemplates distributing as dividends each year all or substantially all of its taxable income. Additionally, you will recognize gain or loss when you redeem Shares. Distributions on, and redemptions of, shares held in an IRA (or other tax-qualified plan) will not be currently taxable. More information about taxes can be found under the section entitled “More Information About Taxes” or in the Fund’s Statement of Additional Information (“SAI”) (for information on how to obtain a copy of the SAI, see the back cover of this Prospectus).

POTENTIAL CONFLICTS OF INTEREST

If you purchase the Fund through a broker-dealer or other financial intermediary (such as a bank), the Fund may pay the intermediary for the sale of Fund Shares and other related services. These payments may create a conflict of interest by influencing the broker-dealer or other intermediary and your salesperson to recommend the Fund over another investment. Ask your salesperson or visit your financial intermediary’s website for more information.

FUND INFORMATION

MORE INFORMATION ABOUT FUND INVESTMENTS

The investments and strategies described in this Prospectus are those that the Fund uses under normal conditions. During unusual economic or market conditions, or for temporary defensive purposes, the Fund may invest up to 100% of its assets in money market instruments and other cash equivalents that would not ordinarily be consistent with its investment objective. If the Fund invests in this manner, it may not achieve its investment objective. The Fund will only make temporary defensive investments if the Adviser believes that the risk of loss outweighs the opportunity for capital appreciation.

This Prospectus describes the Fund's principal investment strategies, and the Fund will normally invest in the types of securities described in this Prospectus. In addition to the investments and strategies described in this Prospectus, the Fund also may invest, to a lesser extent, in other securities, use other strategies and engage in other investment practices that are not part of its principal investment strategy. These investments and strategies, as well as those described in this Prospectus, are described in detail in the Fund's SAI. Of course, there is no guarantee that the Fund will achieve its investment objective.

MORE INFORMATION ABOUT RISK

The Fund is a mutual fund. A mutual fund pools shareholders' money and, using professional investment managers, invests it in securities.

The Fund has an investment objective and strategies for reaching that objective. The Adviser invests the Fund's assets in a way that it believes will help the Fund achieve its objective. Still, investing in the Fund involves risk and there is no guarantee that the Fund will achieve its objective. The Adviser's judgments about the markets, the economy, or companies may not anticipate actual market movements, economic conditions or company performance, and these judgments may affect the return on your investment. In fact, no matter how good a job the Adviser does, you could lose money on your investment in the Fund, just as you could with similar investments. **A Fund share is not a bank deposit and it is not insured or guaranteed by the FDIC or any government agency.**

The value of your investment in the Fund is based on the market prices of the securities the Fund holds. These prices change daily due to economic and other events that affect particular companies and other issuers. These price movements, sometimes called volatility, may be greater or lesser depending on the types of securities the Fund owns and the markets in which they trade. The effect on the Fund of a change in the value of a single security will depend on how widely the Fund diversifies its holdings.

Equity Risk — Equity securities include public and privately issued equity securities, common and preferred stocks, warrants, rights to subscribe to common stock and convertible securities, as well as instruments that attempt to track the price movement of equity indices. Investments in equity securities and equity derivatives in general are subject to market risks that may cause their prices to fluctuate over time. The value of such securities convertible into equity securities, such as warrants or convertible debt, is also affected by prevailing interest rates, the credit quality of the issuer and any call provision. Fluctuations in the value of equity securities in which a mutual fund invests will cause the Fund's net asset value ("NAV") to fluctuate. An investment in a portfolio of equity securities may be more suitable for long-term investors who can bear the risk of these share price fluctuations.

Foreign Security Risk — Investments in securities of foreign companies (including direct investments as well as ADRs) can be more volatile than investments in U.S. companies. Diplomatic, political, or economic developments, including nationalization or appropriation, could affect investments in foreign companies. Foreign securities markets generally have less trading volume and less liquidity than U.S. markets. In addition, the value of securities denominated in foreign currencies, and of dividends from such securities, can change significantly when foreign currencies strengthen or weaken relative to the U.S. dollar. Foreign companies or governments generally are not subject to uniform accounting, auditing, and financial reporting standards comparable to those applicable to domestic U.S. companies or governments. Transaction costs are generally higher than those in the United States and expenses for custodial arrangements of foreign securities may be somewhat greater than typical expenses for custodial arrangements of similar U.S. securities. Some foreign governments levy withholding taxes against dividend and interest income. Although in some countries a portion of these taxes are recoverable, the non-recovered portion will reduce the income received from the securities comprising the portfolio.

Derivatives Risks — Derivatives may involve risks different from, and possibly greater than, those of traditional investments. The Fund may use derivatives (such as futures, options, and swaps) to attempt to achieve its investment objective and offset certain investment risks, while at the same time maintaining liquidity. These positions may be established for hedging or non-hedging purposes. Risks associated with the use of derivatives include the following risks associated with hedging and leveraging activities:

- The success of a hedging strategy may depend on an ability to predict movements in the prices of individual securities, fluctuations in markets, and movements in interest rates.
- The Fund may experience losses over certain ranges in the market that exceed losses experienced by a fund that does not use derivatives.
- There may be an imperfect or no correlation between the changes in market value of the securities held by the Fund and the prices of derivatives.
- There may not be a liquid secondary market for derivatives.
- Trading restrictions or limitations may be imposed by an exchange.
- Government regulations may restrict trading derivatives.
- The other party to an agreement (e.g., options or swaps) may default; however, in certain circumstances, such counterparty risk may be reduced by having an organization with very good credit act as intermediary. Because options premiums paid or received by the Fund are small in relation to the market value of the investments underlying the options, buying and selling put and call options can be more speculative than investing directly in securities.

Securities Lending Risks — The Fund may seek to increase its income by lending portfolio securities to institutions, such as certain broker-dealers. Portfolio security loans are secured continuously by collateral maintained on a current basis at an amount at least equal to the market value of the securities loaned. The value of the securities loaned by the Fund will not exceed 33 1/3% of the value of the Fund's total assets. The Fund may experience a loss or delay in the recovery of its securities if the borrowing institution breaches its agreement with the Fund.

DISCLOSURE OF PORTFOLIO HOLDINGS

A description of the policies and procedures of The RBB Fund, Inc. (the “Company”) with respect to the disclosure of the Fund’s portfolio securities is available in the Fund’s SAI.

MORE INFORMATION ABOUT MANAGEMENT OF THE FUND

Investment Adviser

Perimeter Capital Management LLC, a Delaware corporation formed in 2006, serves as the investment adviser to the Fund. The Adviser’s principal place of business is located at Five Concourse Parkway, Suite 2725, Atlanta, Georgia 30328. As of September 30, 2009, the Adviser had approximately \$1 billion in assets under management.

Management Fees

Pursuant to an investment advisory agreement with the Company, the Adviser is entitled to an advisory fee at the annual rate of 0.90% of the Fund’s average daily net assets, computed daily and payable monthly. A discussion regarding the Board of Directors’ basis for approving the investment advisory agreement with respect to the Fund will be available in the Fund’s semi-annual report for the fiscal period ending January 31, 2010.

The Adviser has contractually agreed to waive its advisory fees and/or reimburse expenses to the extent that total annual Fund operating expenses (other than acquired fund fees and expenses, brokerage commissions, extraordinary items, interest or taxes) exceed 1.10% of the Fund’s average daily net assets attributable to I Shares through December 31, 2011. If at any time during the first three years the Advisory Agreement is in effect, the Fund’s total annual operating expenses for I Shares for that year are less than 1.10%, the Adviser may recoup any waived amount from the Fund if such reimbursement does not cause the Fund to exceed existing expense limitations. For the fiscal year ended July 31, 2009, the Predecessor Fund paid 0.59% (expressed as a percentage of average net assets) to the Adviser for its services. Had fee waivers not been in place, the Predecessor Fund would have paid 0.90%.

Portfolio Management

The Fund is managed by a team of investment professionals headed by Mark D. Garfinkel, Chartered Financial Analyst (“CFA”). Although Mr. Garfinkel is primarily responsible for making investment decisions for the Fund, Jim N. Behre also plays an integral part in generating investment ideas and making recommendations for the Fund.

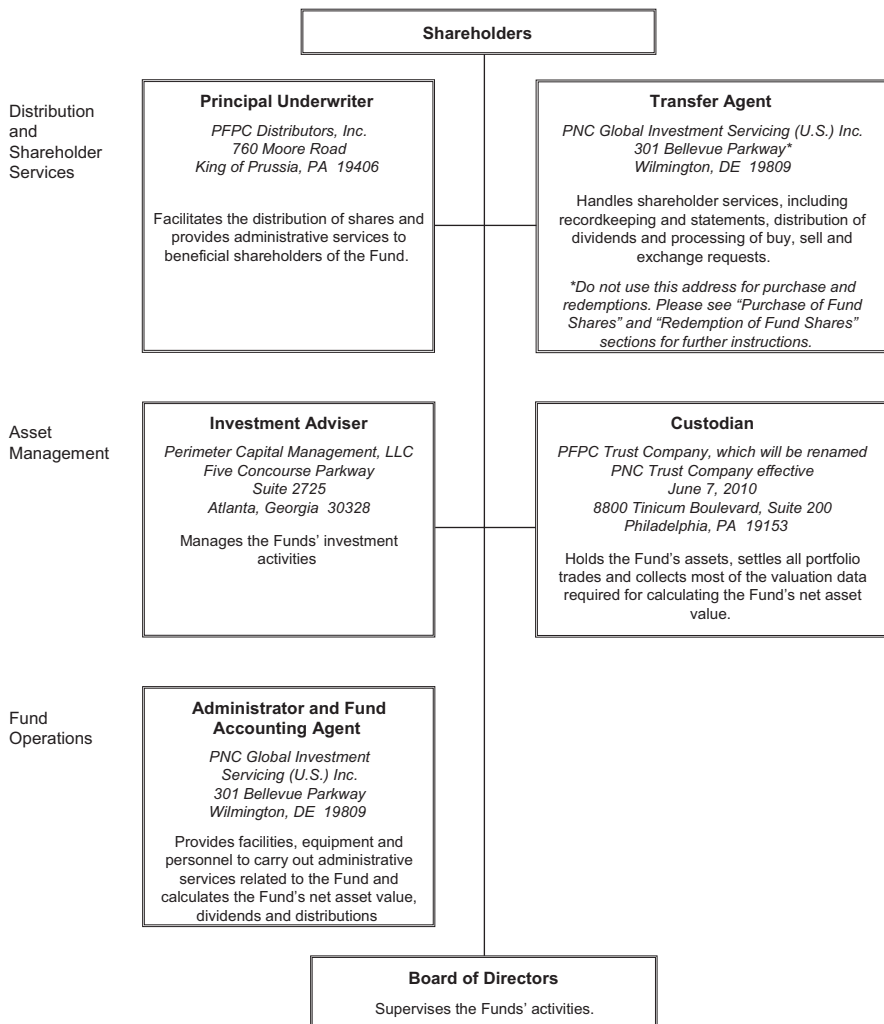
Mark D. Garfinkel is a founding partner of the Adviser and a member of its management committee. As the Adviser’s small-cap growth Portfolio Manager and Chief Investment Officer, he has over 22 years of investment management experience. Prior to the formation of the Adviser in June 2006, Mr. Garfinkel spent 8 years managing Trusco Capital Management, Inc.’s small cap growth discipline, which he and lead analyst, Jim Behre, co-designed in 1998. Mr. Garfinkel is a member of the Atlanta Society of Financial Analysts, received his CFA designation in 1993, and earned his B.A. (1986) and M.B.A. (1987) from Vanderbilt University.

Jim N. Behre is a founding partner of the Adviser and a member of the management committee. As the Adviser’s small-cap growth Senior Research Analyst and Director of Investment Research, he brings over 23 years of investment experience, specializing in small- to mid-cap companies. Prior to the formation of the Adviser, Mr. Behre worked with Mr. Garfinkel at Trusco Capital Management, Inc. as the lead analyst of the firm’s small-cap growth investment process. In addition, he has had experience as a Securities Principal and Compliance Officer. Mr. Behre is a member of the Atlanta Society of Financial Analysts and earned his B.A. from Barry University (1984) and M.B.A. from Farleigh Dickinson University (1991).

The Fund’s SAI provides additional information about the portfolio managers’ compensation, other accounts managed by the portfolio managers and the portfolio managers’ ownership of securities in the Fund.

OTHER SERVICE PROVIDERS

The following chart shows the Funds' other service providers and includes their addresses and principal activities.



SHAREHOLDER INFORMATION

PRICING OF FUND SHARES

I Shares of the Fund (“Shares”) are priced at their NAV. The NAV per Share of the Fund is calculated as follows:

$$\text{NAV} = \frac{\text{Value of Assets Attributable to I Shares} - \text{Value of Liabilities Attributable to I Shares}}{\text{Number of Outstanding Shares of I Shares}}$$

The Fund’s NAV is calculated once daily at the close of regular trading hours on the New York Stock Exchange (“NYSE”) (generally 4:00 p.m. Eastern time) on each day the NYSE is open. The NYSE is generally open Monday through Friday, except national holidays. The Fund will effect purchases of Fund Shares at the NAV next determined after receipt of your order or request in proper form. The Fund will effect redemptions of Fund Shares at the NAV next calculated after receipt of your order in proper form.

The Fund’s equity securities listed on any national or foreign exchange market system will be valued at the last sale price, except for the National Association of Securities Dealers Automatic Quotation System (“NASDAQ”). Equity securities listed on NASDAQ will be valued at the official closing price. Equity securities traded in the over-the-counter market are valued at their closing prices. If there were no transactions on that day, securities traded principally on an exchange or on NASDAQ will be valued at the mean of the last bid and ask prices prior to the market close. Fixed income securities having a remaining maturity of 60 days or less are valued at amortized cost, which approximates market value. Fixed income securities having a remaining maturity of greater than 60 days are valued using an independent pricing service. When prices are not available from such service or are deemed to be unreliable, securities may be valued by dealers who make markets in such securities.

If market quotations are unavailable or deemed unreliable, securities will be fair valued in accordance with procedures adopted by the Company’s Board of Directors. Relying on prices supplied by pricing services or dealers or using fair valuation involves the risk that the values used by the Fund to price its investments may be higher or lower than the values used by other investment companies and investors to price the same investments.

Investments in other open-end investment companies are valued based on the NAV of those investment companies (which may use fair value pricing as discussed in their prospectuses).

PURCHASE OF FUND SHARES

Shares representing interests in the Fund are offered continuously for sale by PFPC Distributors, Inc. (the “Distributor”). I Shares are designed for individual and institutional investors.

General. You may purchase Shares of each Fund at the NAV per Share next calculated after your order is received by the Transfer Agent in proper form as described below. After an initial purchase is made, the Transfer Agent will set up an account for you on the Company records. The minimum initial investment in the Fund is \$1,000,000. There is no minimum for subsequent investments. The Fund may accept initial investments of smaller amounts in its sole discretion. You can only purchase Shares of the Fund on days the NYSE is open and through the means described below.

Purchases Through Intermediaries. Shares of the Funds may also be available through certain brokerage firms, financial institutions and other industry professionals (collectively, “Service Organizations”). Certain features of the Shares, such as the initial investment minimum and certain trading restrictions, may be modified or waived by Service Organizations. Service Organizations may impose transaction or administrative charges or other direct fees, which charges and fees would not be imposed if Shares are purchased directly from the Company. Therefore, you should contact the Service Organization acting on your behalf concerning the fees (if any) charged in connection with a purchase or redemption of Shares and should read this Prospectus in light of the terms governing your accounts with the Service Organization. Service Organizations will be responsible for promptly transmitting client or customer purchase and redemption orders to the Company in accordance with their agreements with the Company or its agent and with clients or customers. Service Organizations or, if applicable, their designees that have entered into agreements with the Company or its agent may enter confirmed purchase orders on behalf of clients and customers, with payment to follow no later than the Company’s pricing on the following Business Day. If payment is not received by such time, the Service Organization could be held liable for resulting fees or losses. The Company will be deemed to have received a purchase or redemption order when a Service Organization, or, if

applicable, its authorized designee, accepts a purchase or redemption order in good order if the order is actually received by the Company in good order not later than the next business morning. If a purchase order is not received by the Fund in good order, PNC Global Investment Servicing (U.S.) Inc. (the “Transfer Agent”) will contact the financial intermediary to determine the status of the purchase order. Orders received by the Company in good order will be priced at the Fund’s NAV next computed after such orders are deemed to have been received by the Service Organization or its authorized designee.

The Company relies upon the integrity of Service Organizations to ensure that orders are timely and properly submitted. The Fund cannot assure you that a Service Organization properly submitted to it all purchase and redemption orders received from the Service Organization’s customers before the time for determination of the Fund’s NAV in order to obtain that day’s price.

For administration, subaccounting, transfer agency and/or other services, the Adviser, the Distributor or their affiliates may pay Service Organizations and certain recordkeeping organizations a fee (the “Service Fee”) based on the average annual NAV of accounts with the Company maintained by such Service Organizations or recordkeepers. The Service Fee payable to any one Service Organization is determined based upon a number of factors, including the nature and quality of services provided, the operations processing requirements of the relationship and the standardized fee schedule of the Service Organization or recordkeeper.

Initial Investment By Mail. Subject to acceptance by the Fund, an account may be opened by completing and signing an Account Application and mailing it to the Fund at the address noted below, together with a check payable to Perimeter Small Cap Growth Fund. Third party endorsed checks or foreign checks will not be accepted.

Perimeter Small Cap Growth Fund
c/o PNC Global Investment Servicing (U.S.) Inc.
P.O. Box 9842
Providence, RI 02940-8042

or overnight to:

Perimeter Small Cap Growth Fund
c/o PNC Global Investment Servicing (U.S.) Inc.
101 Sabin Street
Pawtucket, RI 02860-1427

Subject to acceptance by the Fund, payment for the purchase of Shares received by mail will be credited to a shareholder's account at the NAV per Share of the Fund next determined after receipt of payment in good order.

Initial Investment By Wire. Subject to acceptance by the Fund, Shares may be purchased by wiring federal funds to PNC Bank, N.A. (see instructions below). A completed Account Application must be forwarded to the PNC at the address noted above under "Initial Investment by Mail" in advance of the wire. Notification must be given to PNC at (888) 520-3277 prior to 4:00 p.m., Eastern time, on the wire date. (Prior notification must also be received from investors with existing accounts.) Funds should be wired to:

PNC Bank, N.A.
Philadelphia, Pennsylvania 19103
ABA# 0310-005-3
Account # 8611799161
F/B/O Perimeter Small Cap Growth Fund – I Class Shares
Ref. (Shareholder or Account Name; Account Number)

Federal funds wire purchases will be accepted only on days when the Fund and PNC Bank, N.A. are open for business.

Additional Investments. Additional investments may be made at any time by purchasing Shares at the NAV per share of the Fund by mailing a check to the Transfer Agent at the address noted above under "Initial Investment by Mail" (payable to Perimeter Small Cap Growth Fund) or by wiring monies to PNC Bank, N.A. as outlined above under "Initial Investment by Wire." Notification must be given to the Transfer Agent at 1-888-968-4964 prior to 4:00 p.m., Eastern time, on the wire date. Initial and additional purchases made by check cannot be redeemed until payment of the purchase has been collected, which may take up to fifteen calendar days from the purchase date.

Retirement Plans/IRA Accounts. A \$15.00 retirement custodial maintenance fee is charged per IRA account per year. For further information as to applications and annual fees, contact the Transfer Agent at 1-888-968-4964. To determine whether the benefits of an IRA are available and/or appropriate, you should consult with a tax advisor.

Other Purchase Information. The Company reserves the right, in its sole discretion, to suspend the offering of Shares or to reject purchase orders when, in the judgment of management, such suspension or rejection is in the best interests of the Fund. The Adviser will monitor the Fund's total assets and may, subject to Board approval, decide to close the Fund at any time to new investments or to new accounts due to concerns that a significant increase in the size of the Fund may adversely affect the implementation of the Fund's strategy. The Adviser, subject to Board approval, may also choose to reopen the Fund to new investments at any time, and may subsequently close the Fund again should concerns regarding the Fund's size recur. If the Fund closes to new investments, the Fund may be offered only to certain existing shareholders of the Fund and certain other persons who may be subject to cumulative, maximum purchase amounts, as follows:

- a. persons who already hold Shares of the Fund directly or through accounts maintained by brokers by arrangement with the Adviser;
- b. existing and future clients of financial advisers and planners whose clients already hold Shares of the Fund;
- c. employees of the Adviser and their families, and
- d. directors of the Company.

Distributions to all shareholders of the Fund will continue to be reinvested unless a shareholder elects otherwise. The Adviser, subject to Board approval, reserves the right to implement specific purchase limitations at the time of closing, including limitations on current shareholders.

Purchases of the Fund's Shares will be made in full and fractional Shares of the Fund calculated to three decimal places. Certificates for Shares will not be issued except at the written request of the shareholder. Certificates for fractional Shares, however, will not be issued.

Shares may be purchased and subsequent investments may be made by principals and employees of the Adviser and their family members, either directly or through their IRAs, and by any pension and profit-sharing plan of the Adviser, without being subject to the minimum investment limitation. The Company's officers are authorized to waive the minimum initial investment requirement.

Good Order. You must include complete and accurate required information on your purchase request. Please see “Purchase of Fund Shares” for instructions. Purchase requests not in good order may be rejected.

Customer Identification Program. Federal law requires the Company to obtain, verify and record identifying information, which may include the name, residential or business street address, date of birth (for an individual), social security or taxpayer identification number or other identifying information for each investor who opens or reopens an account with the Company. Applications without the required information, or without any indication that a social security or taxpayer identification number has been applied for, may not be accepted. After acceptance, to the extent permitted by applicable law or its customer identification program, the Company reserves the right (a) to place limits on transactions in any account until the identity of the investor is verified; or (b) to refuse an investment in a Company portfolio or to involuntarily redeem an investor’s shares and close an account in the event that an investor’s identity is not verified. The Company and its agents will not be responsible for any loss in an investor’s account resulting from the investor’s delay in providing all required identifying information or from closing an account and redeeming an investor’s Shares when an investor’s identity cannot be verified.

REDEMPTION OF FUND SHARES

You may redeem Fund Shares at the next NAV calculated after a redemption request is received by the Transfer Agent in proper form. You can only redeem Shares of the Fund on days the NYSE is open and through the means described below. You may redeem Fund Shares by mail, or, if you are authorized, by telephone. The value of Shares redeemed may be more or less than the purchase price, depending on the market value of the investment securities held by the Fund.

Redemption By Mail. Your redemption requests should be addressed to Perimeter Small Cap Growth Fund, c/o PNC Global Investment Servicing (U.S.) Inc., P.O. Box 9842, Providence, RI 02940-8042, or for overnight delivery to Perimeter Small Cap Growth Fund, c/o PNC Global Investment Servicing (U.S.) Inc., 101 Sabin Street, Pawtucket, RI 02860-1427, and must include:

- a letter of instruction, if required, or a stock assignment specifying the number of Shares or dollar amount to be redeemed, signed by all

registered owners of the Shares in the exact names in which they are registered;

- any required Medallion signature guarantees, which are required when (i) the redemption proceeds are to be sent to someone other than the registered shareholder(s), (ii) the redemption request is for \$10,000 or more; or (iii) a Share transfer request is made. A Medallion signature guarantee is a special signature guarantee that may be obtained from a domestic bank or trust company, broker, dealer, clearing agency or savings association which is a participant in a Medallion signature guarantee program recognized by the Securities Transfer Association. A Medallion imprint or Medallion stamp indicates that the financial institution is a member of a Medallion signature guarantee program and is an acceptable signature guarantor. The three recognized Medallion signature guarantee programs are Securities Transfer Agent Medallion Program (STAMP), Stock Exchanges Medallion Program (SEMP) and New York Stock Exchange, Inc. Medallion Program (MSP). Signature guarantees which are not a part of these programs will not be accepted. Please note that a notary public stamp or seal is not acceptable; and
- other supporting legal documents, if required, in the case of estates, trusts, guardianships, custodianships, corporations, pension and profit sharing plans and other organizations.

Redemption By Telephone. In order to utilize the telephone redemption option, you must indicate that option on your Account Application. Please note that the telephone redemption option is not available for retirement accounts. You may then initiate a redemption of Shares by calling the Transfer Agent at 1-888-968-4964 and requesting that the redemption proceeds be mailed to the primary registration address or wired per the authorized instructions. A wire charge of \$7.50 is assessed and charged to the shareholder. If the telephone redemption option is authorized, the Transfer Agent may act on telephone instructions from any person representing himself or herself to be a shareholder and believed by the Transfer Agent to be genuine. The Transfer Agent's records of such instructions are binding and shareholders, not the Fund or its Transfer Agent, bear the risk of loss in the event of unauthorized instructions reasonably believed by the Fund or its Transfer Agent to be genuine. The Fund and the Transfer Agent will employ reasonable procedures to confirm that instructions communicated are genuine and, if it does not, it may be liable for any

losses due to unauthorized or fraudulent instructions. The procedures employed by the Fund and the Transfer Agent in connection with transactions initiated by telephone include tape recording of telephone instructions and requiring some form of personal identification prior to acting upon instructions received by telephone.

Redemption Fee. In an effort to discourage short-term trading and defray costs incurred by shareholders as a result of same, the Fund charges a 2% redemption fee on redemptions of Fund Shares sold within 7 days of their purchase. The fee is deducted from the sale proceeds and cannot be paid separately, and any proceeds of the fee are credited to the assets of the Fund. The fee does not apply to Shares purchased with reinvested dividends or distributions. The redemption fee is applicable to Shares of the Fund purchased either directly or through a financial intermediary, such as a broker-dealer. Transactions through financial intermediaries typically are placed with the Fund on an omnibus basis and include both purchase and sale transactions placed on behalf of multiple investors. For this reason, the Fund has undertaken to notify financial intermediaries of their obligation to assess the redemption fee on customer accounts and to collect and remit the proceeds to the Fund. However, due to operational requirements, the intermediaries' methods for tracking and calculating the fee may be inadequate or differ in some respects from those of the Fund.

The redemption fee may not apply to certain categories of redemptions, such as those that the Fund reasonably believes may not raise frequent trading or market timing concerns. These categories include, but are not limited to, the following: (i) participants in certain group retirement plans whose processing systems are incapable of properly applying the redemption fee to underlying shareholders; (ii) redemptions resulting from certain transfers upon the death of a shareholder; (iii) redemptions by certain pension plans as required by law or by regulatory authorities; (iv) systematic redemptions; and (v) retirement loans and withdrawals. The Fund reserves the right to modify or eliminate the redemption fees or waivers at any time.

Involuntary Redemption: The Fund reserves the right to redeem a shareholder's account in the Fund at any time the value of the account falls below \$500 as a result of a redemption or an exchange request. Shareholders will be notified in writing that the value of their account in the Fund is less than \$500 and will be allowed 30 days to make additional investments before the redemption is processed. The Fund

may assert the right to redeem your Shares at current NAV at any time and without prior notice if, and to the extent that, such redemption is necessary to reimburse the Fund for any loss sustained by reason of your failure to make full payment for Shares of the Fund you previously purchased or subscribed for.

Other Redemption Information: Redemption proceeds for Shares of the Fund recently purchased by check may not be distributed until payment for the purchase has been collected, which may take up to fifteen days from the purchase date. Shareholders can avoid this delay by utilizing the wire purchase option. Other than as described above, payment of the redemption proceeds will be made within seven days after receipt of an order for a redemption. The Company may suspend the right of redemption or postpone the date at times when the NYSE is closed or under any emergency circumstances as determined by the SEC.

If the Board of Directors determines that it would be detrimental to the best interests of the remaining shareholders of the Fund to make payment wholly or partly in cash, redemption proceeds may be paid in whole or in part by an in-kind distribution of readily marketable securities held by the Fund instead of cash in conformity with applicable rules of the SEC. Investors generally will incur brokerage charges on the sale of portfolio securities so received in the payment of redemptions. Investors also will bear the risk of fluctuations in the market value of securities received in an in-kind redemption until the securities are sold. The Company has elected, however, to be governed by Rule 13f-1 under the Investment Company Act of 1940, as amended, so that the Fund is obligated to redeem its Shares solely in cash up to the lesser of \$250,000 or 1% of the Fund's NAV during any 90-day period for any one shareholder of the Fund.

Proper Form: You must include complete and accurate required information on your redemption request. Redemption requests not in proper form may be delayed.

MARKET TIMING

In accordance with the policy adopted by the Company's Board of Directors, the Company discourages market timing and other excessive trading practices. Purchases should be made with a view to longer-term investment only. Excessive short-term (market timing) trading practices may disrupt portfolio management strategies, increase

brokerage and administrative costs, harm Fund performance and result in dilution in the value of Fund shares held by long-term shareholders. The Company and the Adviser reserve the right to reject or restrict purchase requests from any investor. The Company and the Adviser will not be liable for any loss resulting from rejected purchase orders. To minimize harm to the Company and its shareholders (or the Adviser), the Company (or the Adviser) will exercise their right if, in the Company's (or the Adviser's) judgment, an investor has a history of excessive trading or if an investor's trading, in the judgment of the Company or the Adviser, has been or may be disruptive to the Fund. No waivers of the provisions of the policy established to detect and deter market timing and other excessive trading activity are permitted that would harm the Fund and its shareholders or would subordinate the interests of the Fund and its shareholders to those of the Adviser or any affiliated person or associated person of the Adviser.

Pursuant to the policy adopted by the Company's Board of Directors, the Adviser has developed criteria that it uses to identify trading activity that may be excessive. The Adviser reviews on a regular, periodic basis available information related to the trading activity in the Fund in order to assess the likelihood that the Fund may be the target of excessive trading. As part of its excessive trading surveillance process, the Adviser, on a periodic basis, examines transactions that exceed certain monetary thresholds or numerical limits within a period of time. If, in its judgment, the Adviser detects excessive, short-term trading, the Adviser may reject or restrict a purchase request and may further seek to close an investor's account with the Fund. The Adviser may modify its surveillance procedures and criteria from time to time without prior notice regarding the detection of excessive trading or to address specific circumstances. The Adviser will apply the criteria in a manner that, in the Adviser's judgment, will be uniform.

There is no assurance that the Fund will be able to identify market timers, particularly if they are investing through intermediaries.

If necessary, the Company may prohibit additional purchases of Fund Shares by a financial intermediary or by certain customers of the financial intermediary. Financial intermediaries may also monitor their customers' trading activities in the Company. The criteria used by intermediaries to monitor for excessive trading may differ from the criteria used by the Company. If a financial intermediary fails to enforce the Company's excessive trading policies, the Company may take certain actions, including terminating the relationship.

DIVIDENDS AND DISTRIBUTIONS

The Fund will distribute substantially all of its net investment income and net realized capital gains, if any, to its shareholders. All distributions are reinvested in the form of additional full and fractional Shares of the Fund unless a shareholder elects otherwise. The Fund will declare and pay dividends from net investment income annually. Net realized capital gains (including net short-term capital gains), if any, will be distributed by the Fund at least annually.

MORE INFORMATION ABOUT TAXES

The following is a summary of certain U.S. tax considerations relevant under current law, which may be subject to change in the future. Except where otherwise indicated, the discussion relates to investors who are individual U.S. citizens or residents. You should consult your tax adviser for further information regarding federal, state, local and/or foreign tax consequences relevant to your specific situation.

Distributions. The Fund contemplates distributing as dividends each year all or substantially all of its taxable income, including its net capital gain (the excess of net long-term capital gain over net short-term capital loss). Except as otherwise discussed below, you will be subject to federal income tax on Fund distributions regardless of whether they are paid in cash or reinvested in additional shares. Fund distributions attributable to short-term capital gains and net investment income will generally be taxable to you as ordinary income, except as discussed below.

Distributions attributable to the net capital gain of the Fund will be taxable to you as long-term capital gain, no matter how long you have owned your Fund shares. The maximum long-term capital gain rate applicable to individuals, estates, and trusts is currently 15%. You will be notified annually of the tax status of distributions to you.

Distributions of “qualifying dividends” will also generally be taxable to you at long-term capital gain rates, as long as certain requirements are met. In general, if 95% or more of the gross income of the Fund (other than net capital gain) consists of dividends received from domestic corporations or “qualified” foreign corporations (“qualifying dividends”), then all distributions paid by the Fund to individual shareholders will be taxed at long-term capital gains rates. But if less than 95% of the gross income of the Fund (other than net capital gain) consists of qualifying dividends, then distributions paid by the Fund to

individual shareholders will be qualifying dividends only to the extent they are derived from qualifying dividends earned by the Fund. For the lower rates to apply, you must have owned your Fund shares for at least 61 days during the 121-day period beginning on the date that is 60 days before the Fund's ex-dividend date (and the Fund will need to have met a similar holding period requirement with respect to the shares of the corporation paying the qualifying dividend). The amount of the Fund's distributions that qualify for this favorable treatment may be reduced as a result of the Fund's securities lending activities (if any), a high portfolio turnover rate or investments in debt securities or "non-qualified" foreign corporations.

Distributions from the Fund will generally be taxable to you in the taxable year in which they are paid, with one exception. Distributions declared by the Fund in October, November or December and paid in January of the following year are taxed as though they were paid on December 31.

A portion of distributions paid by the Fund to shareholders that are corporations may also qualify for the dividends-received deduction for corporations, subject to certain holding period requirements and debt financing limitations.

If you purchase shares just before a distribution, the purchase price will reflect the amount of the upcoming distribution, but you will be taxed on the entire amount of the distribution received, even though, as an economic matter, the distribution simply constitutes a return of capital. This is known as "buying into a dividend."

Sales and Exchanges. You will generally recognize taxable gain or loss for federal income tax purposes on a sale, exchange or redemption of your shares based on the difference between your tax basis in the shares and the amount you receive for them. Generally, you will recognize long-term capital gain or loss if you have held your Fund shares for over twelve months at the time you dispose of them. (To aid in computing your tax basis, you should retain your account statements for the periods during which you held shares.)

Any loss realized on shares held for six months or less will be treated as a long-term capital loss to the extent of any capital gain dividends that were received on the shares. Additionally, any loss realized on a disposition of shares of the Fund may be disallowed under "wash sale" rules to the extent the shares disposed of are replaced with other shares

of the Fund within a period of 61 days beginning 30 days before and ending 30 days after the shares are disposed of, such as pursuant to a dividend reinvestment in shares of the Fund. If disallowed, the loss will be reflected in an upward adjustment to the basis of the shares acquired.

IRAs and Other Tax-Qualified Plans. The one major exception to the preceding tax principles is that distributions on, and sales, exchanges and redemptions of, shares held in an IRA (or other tax-qualified plan) will not be currently taxable.

Backup Withholding. The Fund may be required in certain cases to withhold and remit to the Internal Revenue Service a percentage of taxable dividends or gross proceeds realized upon sale payable to shareholders who have failed to provide a correct tax identification number in the manner required, or who are subject to withholding by the Internal Revenue Service for failure to properly include on their return payments of taxable interest or dividends, or who have failed to certify to the Fund that they are not subject to backup withholding when required to do so or that they are “exempt recipients.” The current withholding rate is 28%.

U.S. Tax Treatment of Foreign Shareholders. For nonresident aliens, foreign corporations and other foreign investors, Fund distributions attributable to net long-term capital gains of the Fund will generally be exempt from U.S. tax, but all other Fund distributions will generally be subject to a 30% withholding tax. The withholding tax may, however, be reduced (and, in some cases, eliminated) under an applicable tax treaty between the United States and a shareholder’s country of residence or incorporation, provided that the shareholder furnishes the Fund with a properly completed Form W-8BEN to establish entitlement for these treaty benefits.

Foreign shareholders will generally not be subject to U.S. tax on gains realized on sale, exchange or redemption of shares of the Fund.

Different U.S. tax rules may apply to a foreign shareholder, however, if the investment in the Fund is connected to a trade or business of the shareholder in the United States or the investor is present in the United States for 183 days or more in a year.

All foreign investors should consult their own tax advisers regarding the tax consequences in their country of residence of an investment in the Fund.

State and Local Taxes. You may also be subject to state and local taxes on income or gain from Fund shares. State income taxes may not apply, however, to the portions of the Fund's distributions, if any, that are attributable to interest on U.S. government securities. You should consult your tax adviser regarding the tax status of distributions in your state and locality.

Sunset of Tax Provisions. Some of the tax provisions described above are subject to sunset provisions. Specifically, a sunset provision provides that the 15% long-term capital gain rate and the taxation of dividends at the long-term capital gain rate will change after 2010.

More information about taxes is contained in the Fund's SAI.

FINANCIAL HIGHLIGHTS

The financial highlights table is intended to help you understand financial performance for the Fund's I Shares, including per share information for a single Fund share. "Total Return" in the table represents the rate that an investor would have earned or lost on an investment in the Fund (assuming reinvestment of all dividends and distributions). The financial information shown below is that of the Predecessor Fund. The information has been audited by Ernst & Young LLP, the Predecessor Fund's independent registered public accounting firm, whose report, along with the Predecessor Fund's financial statements, is included in the Predecessor Fund's annual report dated July 31, 2009. The Predecessor Fund's annual report is available upon request (see back cover for ordering instructions).

	I Shares	
	Year Ended July 31, 2009	Period Ended July 31, 2008*
Net Asset Value, Beginning of Period	\$ 10.42	\$ 11.53
Income from Operations:		
Net Investment Loss ⁽¹⁾	(0.05)	(0.04)
Net Realized and Unrealized Loss on Investments	(1.89)	(1.07)
Total from Operations	(1.94)	(1.11)
Redemption Fees	—	—
Net Asset Value, End of Period	\$ 8.48	\$ 10.42
Total Return†	(18.62)%	(9.63)%
Ratios and Supplemental Data		
Net Assets, End of Period (Thousands)	\$154,905	\$26,616
Ratio of Expenses to Average Net Assets (including waivers, excluding fees paid indirectly)	1.04%	1.03%**
Ratio of Expenses to Average Net Assets (including waivers, and fees paid indirectly)	1.03%	1.00%**
Ratio of Expenses to Average Net Assets (excluding waivers, and fees paid indirectly)	1.36%	1.37%**
Ratio of Net Investment Loss to Average Net Assets	(0.64)%	(0.58)%**
Portfolio Turnover Rate	126%	147%‡

† Total return is for the period indicated and has not been annualized. Total return would have been lower had certain expenses not been waived by the Adviser during the period. The return shown does not reflect the deduction of taxes that a shareholder would pay on Fund distributions or the redemption of Fund shares.

‡ Portfolio turnover rate is for the period ended July 31, 2008.

* Commenced Operations on December 31, 2007.

** Annualized

(1) Per share data calculated using average shares method.

Amounts designated as "—" are zero or rounded to zero.

PERFORMANCE OF COMPARABLE ACCOUNT

The information set forth below represents the performance of another mutual fund managed by Mr. Garfinkel with an investment strategy substantially similar to that of the Fund. Past performance is no guarantee of future performance and should not be considered as a representation of the future results of the Fund. The table compares the average annual total returns of the other mutual fund managed by Mr. Garfinkel to the Russell 2000 Growth Index, an unmanaged index generally representative of the market for stocks of small U.S. companies.

The performance information shown below from January 1, 1999 through December 31, 2005 is the performance of the STI Classic Funds' Small Cap Growth Stock Fund (the "STI Fund"), a registered mutual fund managed principally by Mr. Garfinkel while at Trusco Capital Management, Inc. The STI Fund had substantially similar investment objectives, policies and strategies as the Fund.

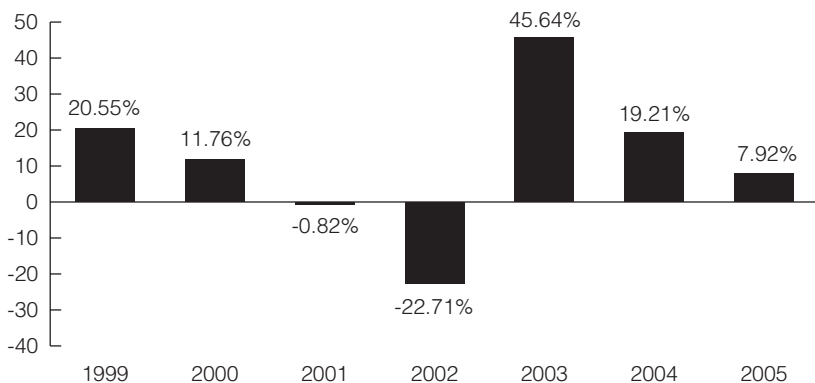
The bar chart and performance table that follow do not show the performance of the Predecessor Fund or the Fund. They show the performance of the STI Fund, a similar mutual fund managed by Mr. Garfinkel. Mr. Garfinkel's past performance in managing this similar mutual fund is no guarantee of the future performance of the Fund.

*This table compares the STI Fund's average annual total returns for the periods ended December 31, 2005 to that of the Russell 2000 Growth Index.**

	1 Year	5 Years	Since Inception
STI Fund Returns	7.92%	7.51%	15.48%
Russell 2000 Growth Index	4.15%	2.28%	6.10%

The performance information of the STI Fund reflects the operating expenses of the STI Fund's I Shares since their inception on October 8, 1998. Russell 2000 Growth Index returns are since September 30, 1998 (Russell 2000 Growth Index returns available only on a month end basis).

This bar chart shows changes in the performance of the STI Fund's I Shares from calendar year to calendar year during the periods that it was managed by Mr. Garfinkel.



The STI Fund's total return from January 1, 2006 to May 31, 2006 was 5.05%.

NO PERSON HAS BEEN AUTHORIZED TO GIVE ANY INFORMATION OR MAKE ANY REPRESENTATIONS NOT CONTAINED IN THIS PROSPECTUS OR IN THE FUND'S SAI INCORPORATED HEREIN BY REFERENCE, IN CONNECTION WITH THE OFFERING MADE BY THIS PROSPECTUS AND, IF GIVEN OR MADE, SUCH REPRESENTATIONS MUST NOT BE RELIED UPON AS HAVING BEEN AUTHORIZED BY THE COMPANY OR ITS DISTRIBUTOR. THIS PROSPECTUS DOES NOT CONSTITUTE AN OFFERING BY THE COMPANY OR BY THE DISTRIBUTOR IN ANY JURISDICTION IN WHICH SUCH OFFERING MAY NOT LAWFULLY BE MADE.

Perimeter Capital Management LLC
Five Concourse Parkway
Suite 2725
Atlanta, Georgia 30328

This Prospectus contains important information you should know before you invest. Read it carefully and keep it for future reference. More information about the Fund is available free of charge, upon request, including:

Annual/Semi-annual Reports These reports contain additional information about the Fund's investments, describe the Fund's performance, list portfolio holdings and discuss recent market conditions and economic trends. The annual report includes Fund strategies that significantly affected the Fund's performance during its last fiscal year. The Fund's annual and semi-annual reports to shareholders are available on the Adviser's website at www.perimetercap.com.

Statement of Additional Information ("SAI") An SAI, dated November 5, 2009, as revised February 8, 2010 has been filed with the SEC. The SAI, which includes additional information about the Fund, and the Fund's Annual and Semi-Annual reports, may be obtained free of charge by calling 1-888-968-4964. The SAI, as supplemented from time to time, is incorporated by reference into this Prospectus and is legally considered a part of this Prospectus. The SAI is available on the Adviser's website at www.perimetercap.com.

Shareholder Inquiries Representatives are available to discuss account balance information, mutual fund prospectuses, literature, programs and services available. Hours: 8 a.m. to 6 p.m. (Eastern time) Monday-Friday. Call: (888) 968-4964.

Purchases And Redemptions Call your registered representative or 1-888-968-4964.

Written Correspondence

P.O. Box Address: Perimeter Small Cap Growth Fund
c/o PNC Global Investment Servicing (U.S.) Inc.,
PO Box 9842, Providence, RI 02940-8042

Street Address: Perimeter Small Cap Growth Fund
c/o PNC Global Investment Servicing (U.S.) Inc.,
101 Sabin Street, Pawtucket, RI 02860-1427

Securities and Exchange Commission You may view and copy information about the Company and the Fund, including the SAI, by visiting the SEC's Public Reference Room in Washington, D.C. or the EDGAR Database on the SEC's Internet site at www.sec.gov. You may also obtain copies of Fund documents by paying a duplicating fee and sending an electronic request to the following e-mail address: publicinfo@sec.gov, or by sending your request and a duplicating fee to the SEC's Public Reference Section, Washington, D.C. 20549-0102. You may obtain information on the operation of the Public Reference Room by calling the SEC at (202) 551-8090.